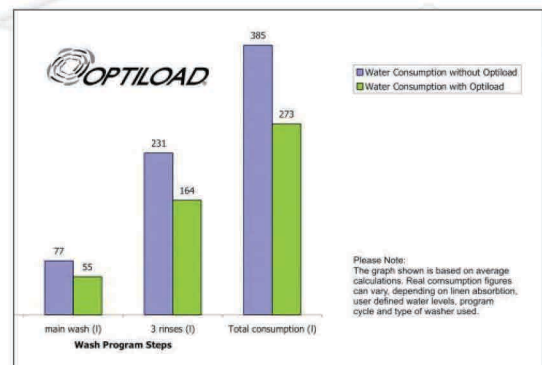


OPTILOAD® and TRACE-TECH®

OPTILOAD®

- Up to 35% Savings with the new OptiLoad® system
- Lavamac provides with huge success the OptiLoad® system on its range of high spin washing machines including the whole range of hygienic barrier washers. OptiLoad® is a unique method that determines the weight of any given wash load and in conjunction with our Graphitronic® Microprocessor, allows automatic adjustment of water levels, heater times and liquid detergent consumption based on this information. The OptiLoad® system is also available as a retrofit kit for our existing customers to take advantage of this latest technology.
- Depending on the model, a saving of up to 35% has been achieved on water, energy and chemicals costs. OptiLoad® has already been available on all the hygienic washer extractors (LMA range – 160, 260, 330, 440, 660, 700, 900, 1100, 1400, 1800 kg) as well as the "Soft Mount" Front loading (LH range - 230, 330, 400, 550 kg).
- Whilst loading your washing machine the Graphitronic® displays the weight of wash load. The machine will then adjust the water and energy consumption to suit to load. Thus you have a guaranteed wash result, reduced energy consumption, so optimising productivity and controlling of your operating cost.



TRACE-TECH®

- Trace-Tech® is the Lavamac traceability software that works as your own "Quality Control" to reduce the risk of contamination and cross infection.
 - All wash process information such as "achieved" water temperatures and water levels are automatically recorded within the washing machines computer memory, wash parameters are continually monitored and if necessary adjusted.
 - All information stored in the washing machine can be uploaded to your PC. This provides you with easy access to detailed reports of any of the wash processes.
 - Should a hard paper copy be required then a full report could be printed. There is also an integral "Real Time Clock" installed to maintain the correct time and date. Furthermore, to identify every wash, a unique batch nuLMAer is generated for each cycle. Real time clock is an option.
 - Should any cycle not complete assigned functions then a warning message will be displayed and it will be noted in the washing machine log. Conformity to Hygiene standards is assured.
- Trace-Tech® software works in various modules. The most simple module allows to connect washing machines in a network and to control and programme them from PC even with the Easy control timer. The most complex „Traceability“ module works with Graphitronic® only.



Type	Trace-Tech®	Optiload®
LA60	+	-
LA75	+	-
LAC60	+	-
LAC75	+	-
LH60	+	-
LH75	+	-
LH95	+	-
LH130	+	-
LH165	+	-
LH230	+	+
LH335	+	+
LH400	+	+
LH550	+	+
LH1200	+	-

note: traceability modul of trace-tech software is available only with Graphitronic controls

+ available as an option

- not available

Type	Trace-Tech®	Optiload®
LN60	+	-
LN75	+	-
LN95	+	-
LN130	+	-
LN180	+	-
LN220	+	-
LN270	+	-
LN335	+	-
LMA160	+	+
LMA260	+	+
LMA330	+	+
LMA440	+	+
LMA660	+	+
LMA700	+	+
LMA900	+	+
LMA1100	+	+
LMA1400	+	+
LMA1800	+	+

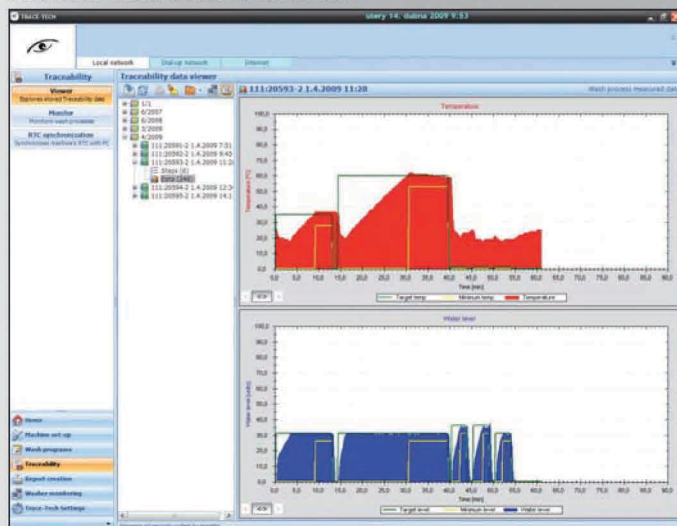
REPORT OF COMPLETED WASH CYCLE

Wash process report					
Program		Washing machine			
20 - 20		255	MB90		
Date cycle:	18.2.2008		Time start cycle:	08:24:36	
Batch No:	7		Time end cycle:	08:52:35	
Errors:	0		Total time of cycle:	00:27:59	
Weight of linen	82 kg				
Wash process completed successfully.					
1 Wash					
Time [min]	5min	On/Off time [sec]	12sec/5sec	Inlets:	1, 2
Temperature [°C]	5°C	Wash RPM:	36 RPM	Signal:	No
Level:	43	Detergents:	A50sec		
Drain					
Time [min]	0.5min	RPM:	100 RPM	Drain valve	Valve 1
2 Rinse					
Time [min]	10min	On/Off time [sec]	12sec/5sec	Inlets:	1, 2
Temperature [°C]	1°C	Wash RPM:	36 RPM	Signal:	No
Level:	20	Detergents:	A30sec B30sec		
Spin					
Time [min]	4.5min	RPM:	500 RPM	Drain valve	Valve 1
3 Tumble					
Time [min]	0.5min	On/Off time [sec]	5sec/5sec	Wash RPM:	36 RPM

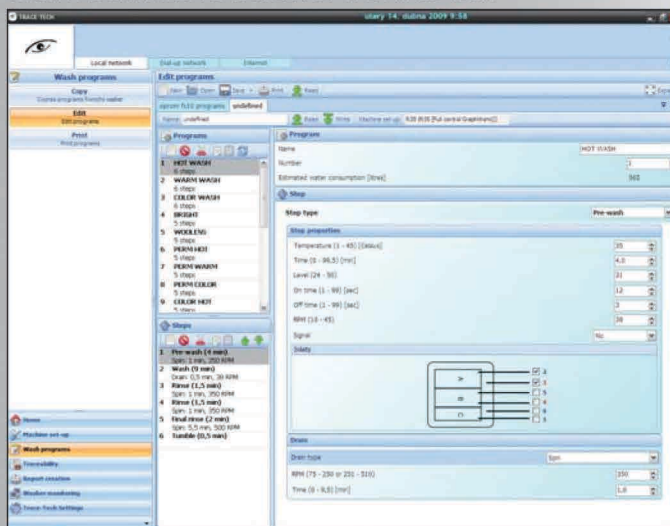
TRACE-TECH® possibilities

	Graphitronic®	Easy control	Easy control - coin
machine configuration settings	•	•	•
programmes settings	•	•	•
monitoring of machines in network	•	•	•
traceability	•		
statistics	•		

SCREEN OF COMPLETED WASH CYCLE



WASH PROGRAM EDITOR SCREEN OF THE TRACE-TECH®



Lavamac preserves the right to change the machines and the specification in this leaflet at any time, without prior notice. Details and photographs are only for information and never binding.

www.lavamac.com

