

## WASHERS - controls

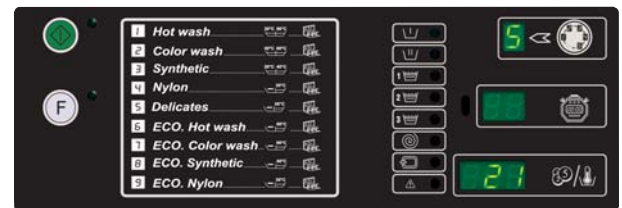
### EASY CONTROL – COIN Version

- The Lavamac EC microprocessor for coin op shops offers 5 different wash cycles.
- Changes can be made to temperatures, wash times, water levels. This is to make the washing cycle as efficient and energy saving as possible.
- Simple One-touch Program selection, for simple user operation.
- As some wash programmes can be more complex and use more energy, the price can be set for each programme individually. Two prices can be set for one type of programme. This is to allow the vendor to maximise his profits in the busy periods.
- Integrated fault diagnostic system for less "down time".
- Interface for the liquid soap suppliers to connect the dosing equipment.
- Fascia is available in a wide variety of languages.
- Computer designed to be interchangeable with other Lavamac models.



### EASY CONTROL

- The Lavamac EC microprocessor offers 15 pre-programmed cycles.
- Changes can be made to temperatures, wash times, water levels. This is to make the washing cycle as efficient and energy saving as possible.
- One-touch cycle selection, for simple user operation.
- Integrated fault diagnostic system.
- Interface for liquid soap suppliers to connect the dosing equipment.
- Fascia is available in a wide variety of languages.
- Computer designed to be interchangeable with other Lavamac models.



### GRAPHITRONIC®

- Graphitronic® has a "state of the art" Graphic display that provides unlimited possibilities.
- Microprocessor with no limits for setting up washing parameters allows changes to be made to wash times, water levels, program steps, as well as the important option of adding extra steps for specialised washing processes.
- Easy interface for detergent dosing and water recycling ancillary equipment.
- Possibility to fit up to eight chemical supply pumps to the washing machine. The computer allows flexibility for either direct control of the pumps or just an output signal.
- Up to 99 different washing processes can be preset into the computers memory. This allows the machine to be set up as economical and energy efficient for all possible processes.
- Multilingual timer
- Easy programming by simple question / answer prompts that appear on the screen. The large screen has the possibility to display pictograms and different fonts, for example Cyrillic, Arabic, Chinese, Korean etc.
- For maintenance and repair situation, the Graphitronic® has an incorporated self diagnostic system, which displays and highlights errors. This function, guarantees you fast and efficient problem diagnosis.
- The Graphitronic® also has a remote access feature that allows communication from another location called Trace-Tech®. Ideal for changing program parameters and monitoring purposes!
- Another recent addition is the OptiLoad® system. This integrated wash load "weighing system" works by means of calculating required water, detergents and energy based on weight and fabric type, thus reducing running costs.



**Graphitronic®**

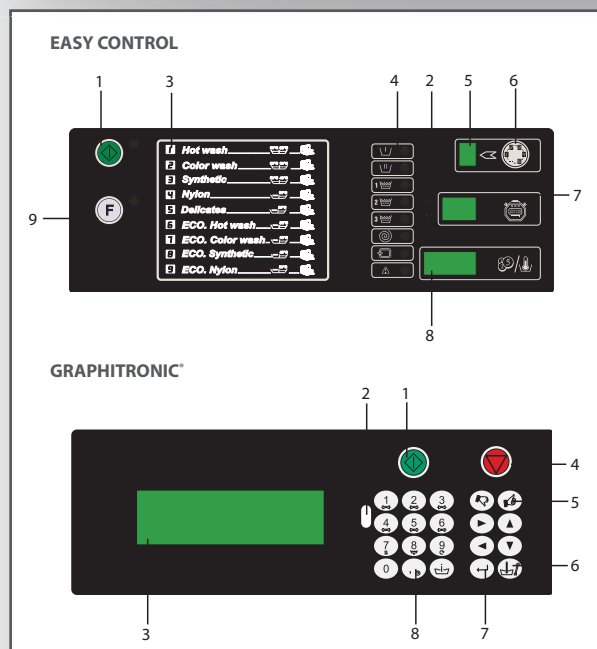
**TRACE-TECH®**

**OPTILOAD®**

Type	Easy Control - coin	Easy Control	Graphitronic <sup>®</sup>
LA60	-	•	-
LA75	-	•	-
LAC60	+	•	-
LAC75	+	•	-
LH60	+	•	+
LH75	+	•	+
LH95	+	•	+
LH130	+	•	+
LH165	+	•	+
LH230	+	+	•
LH230 PRO	-	-	•
LH335	-	-	•
LH400	-	-	•
LH550	-	-	•
LH1200	-	-	•
LN60	+	•	+
LN75	+	•	+
LN95	+	•	+
LN130	+	•	+
LN180	+	•	+
LN220	+	•	+
LN270	+	•	+
LN350	+	•	+
LMA160	-	-	•
LMA260	-	-	•
LMA330	-	-	•
LMA440	-	-	•
LMA660	-	-	•
LMA700	-	-	•
LMA900	-	-	•
LMA1100	-	-	•
LMA1400	-	-	•
LMA1800	-	-	•

• standard execution  
+ available as an option  
- not available

Programmer currently works in following languages: English, French, Spanish, German, Dutch, Czech, Finnish, Danish, Swedish, Norwegian, Italian, Polish, Slovenian, Romanian, Croatian, Hungarian, Latvian, Russian (cyrilic).



#### EASY CONTROL

1. Start button
2. Infrared connection
3. List of washing programmes
4. LED's indicate step of current program
5. Programme nuLMAer
6. Button for programme selection
7. Remaining time
8. Price or water temperature
9. Function button
  - Pre-wash (with or without)
  - Soak
  - Delay time
  - ECO programme
  - No spin
  - Gentle wash
  - Pause (last rinse)

#### GRAPHITRONIC<sup>®</sup>

1. Start button
2. Infrared connection
3. Graphic display
4. Stop button
5. Confirmation button
6. Service button
7. Enter
8. Numerical keypad

Lavamac preserves the right to change the machines and the specification in this leaflet at any time, without prior notice. Details and photographs are only for information and never binding.

[www.lavamac.eu](http://www.lavamac.eu)

